



# Blinn College District

Course Completion Summary Report

Office of Institutional Research and Effectiveness

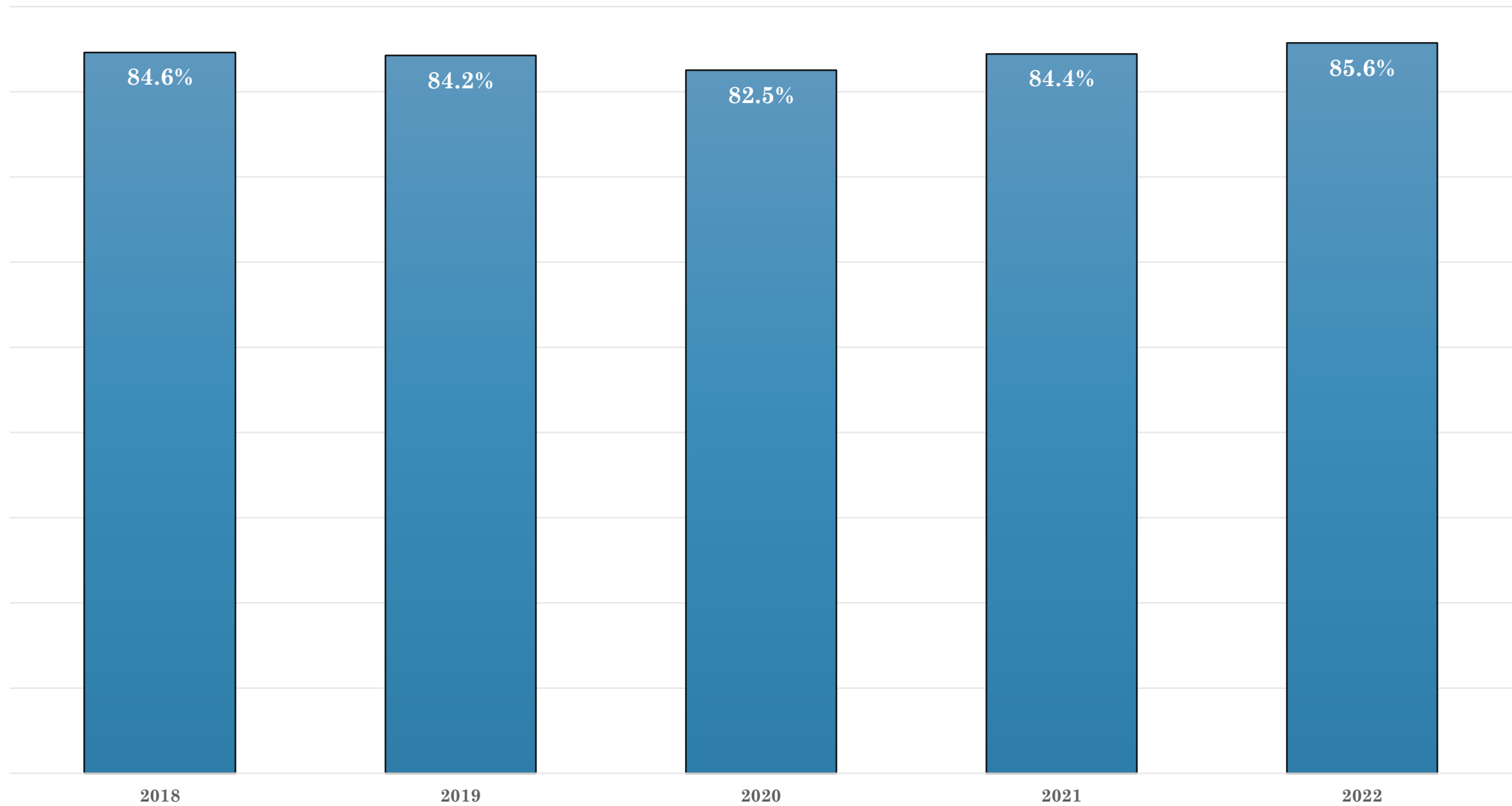
Updated: Spring 2023

# Analysis Notes

- *Completion Rate* is defined as the proportion of course completions (any mark earned other than drops or withdrawals) divided by the total number of student enrolled.
- Completion Rate includes any earned D and F marks for a given comparison.
- Greater values for this metrics are evaluated as more positive as they indicate increased levels of student success.
- These metrics are theoretically leading indicators of student graduation and/or transfer.

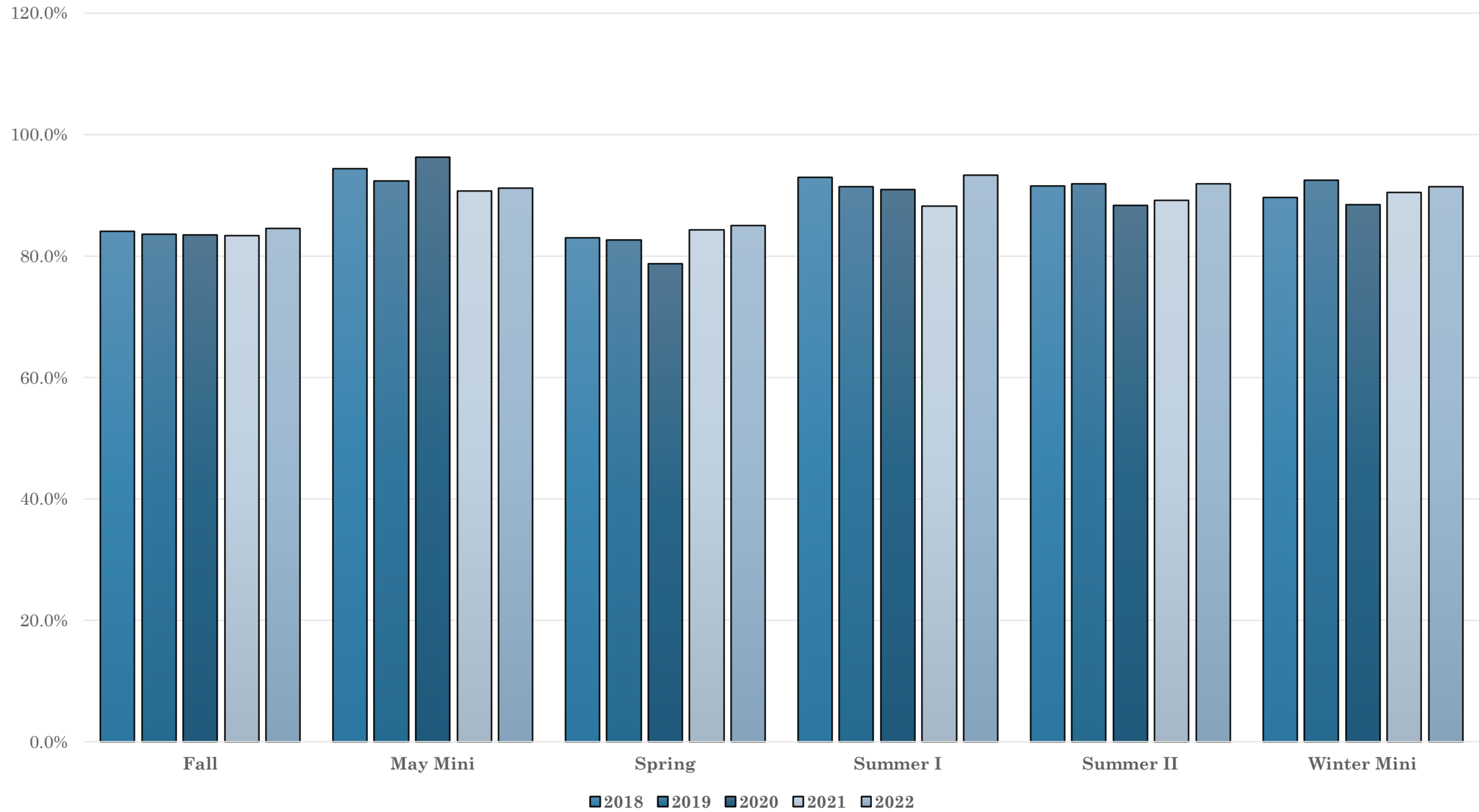
# Course Completion Rates

# Course Completion Rate by Academic Year



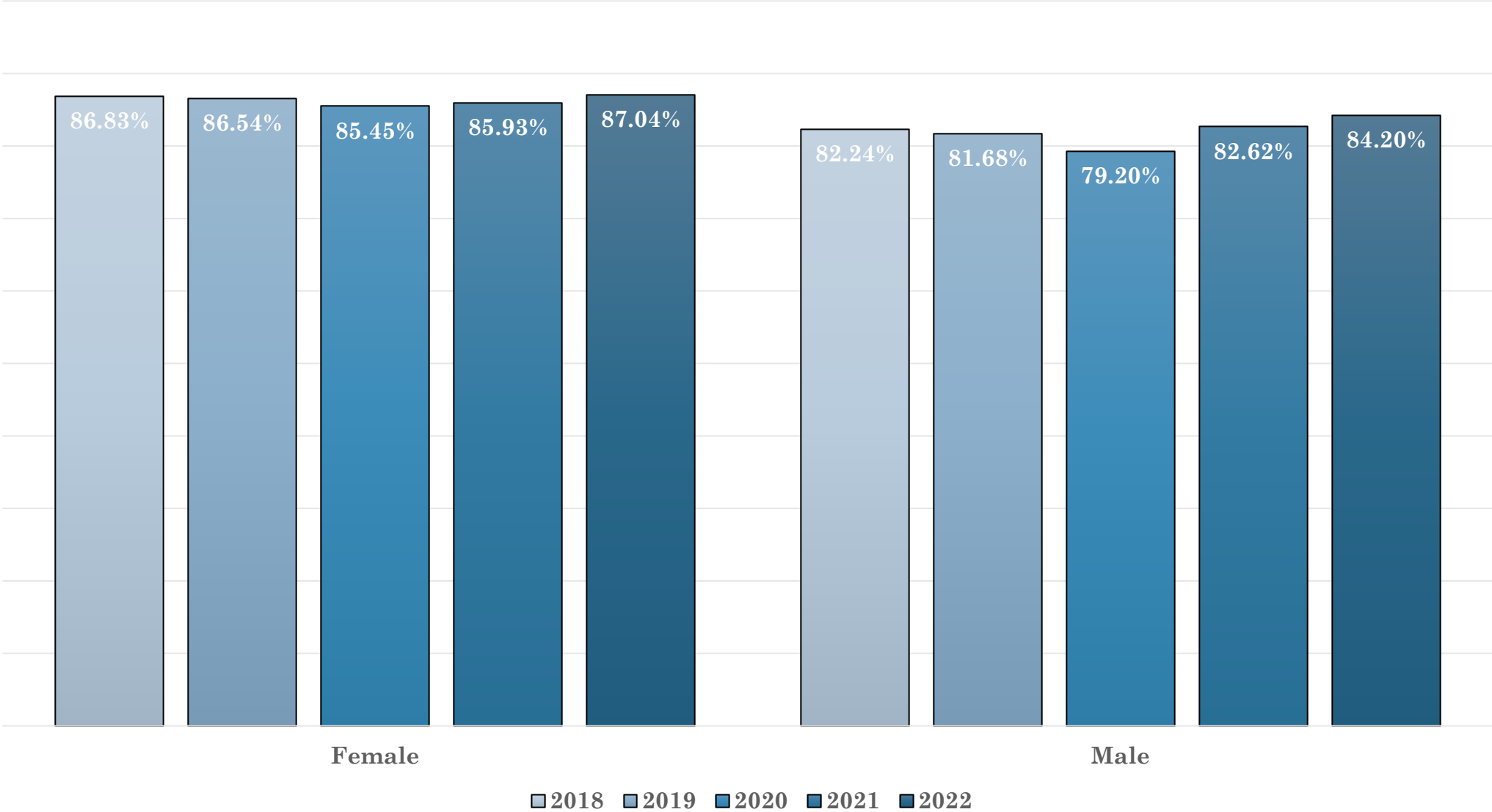
Source: Argos Grades Analysis Data Block, 2018-2022

# Course Completion Rate by Semester



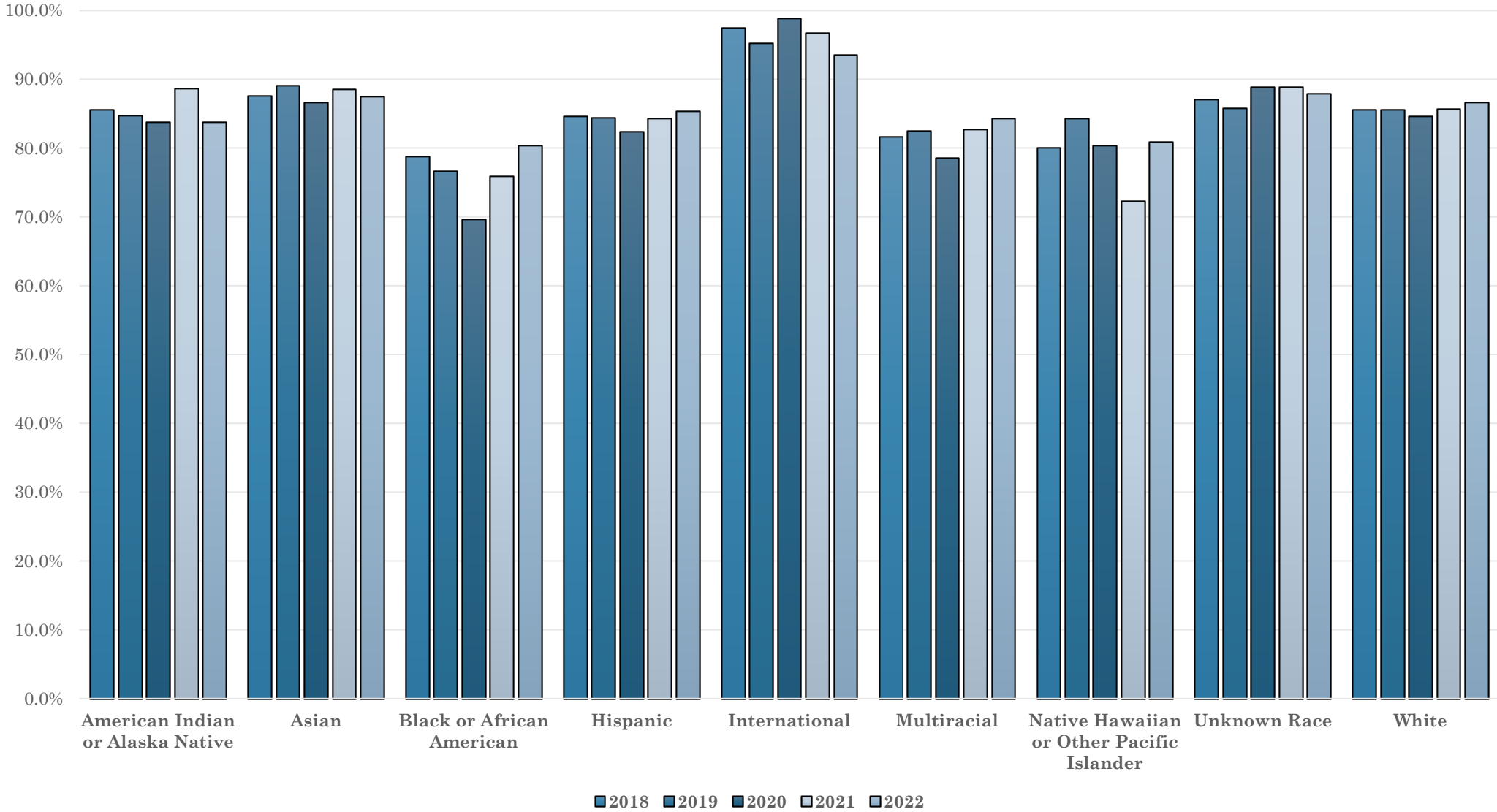
Source: Argos Grades Analysis Data Block, 2018-2022

# Course Completion Rate by Gender



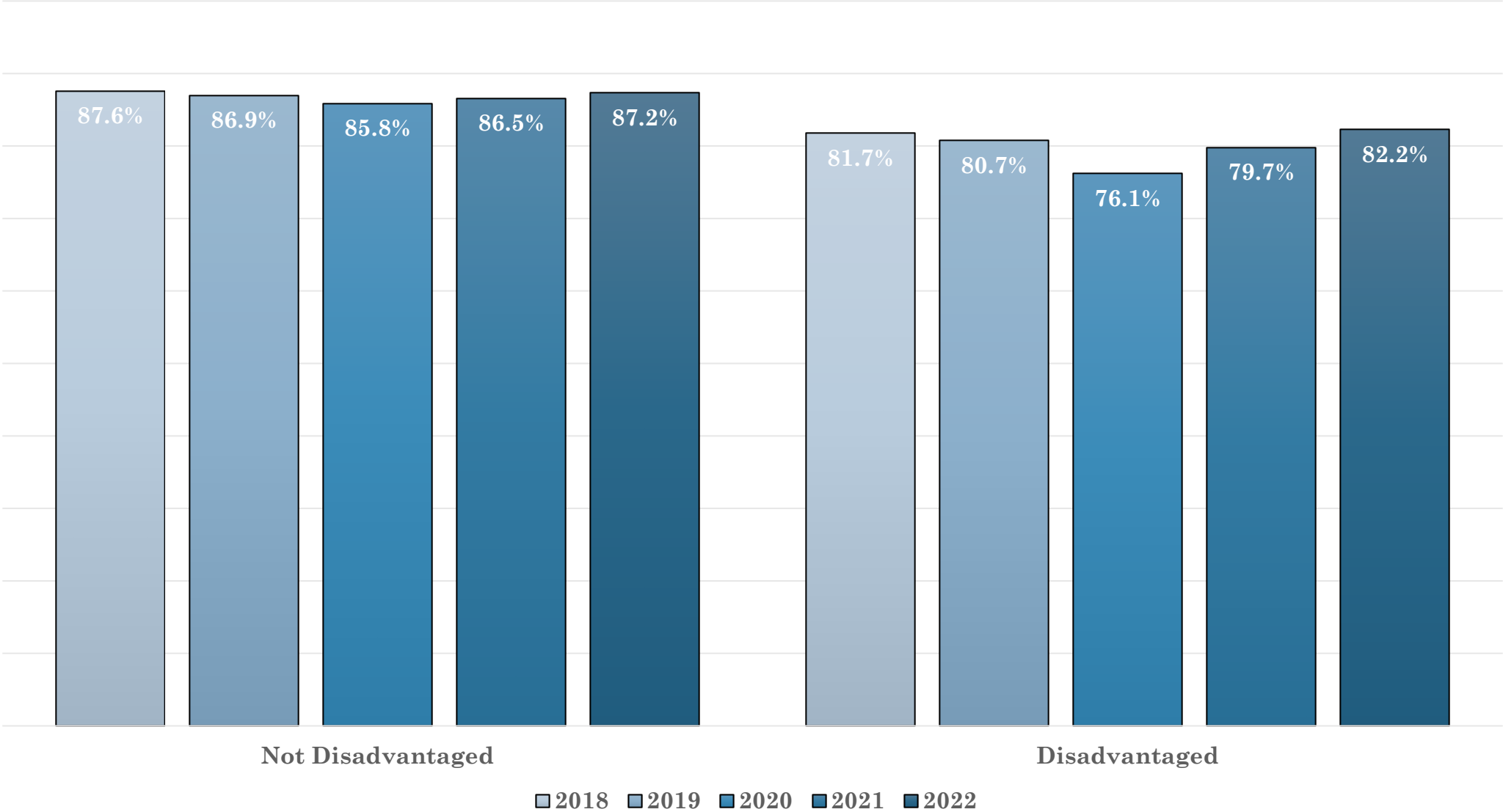
Source: Argos Grades Analysis Data Block, 2018-2022

# Course Completion rate by Ethnicity



Source: Argos Grades Analysis Data Block, 2018-2022

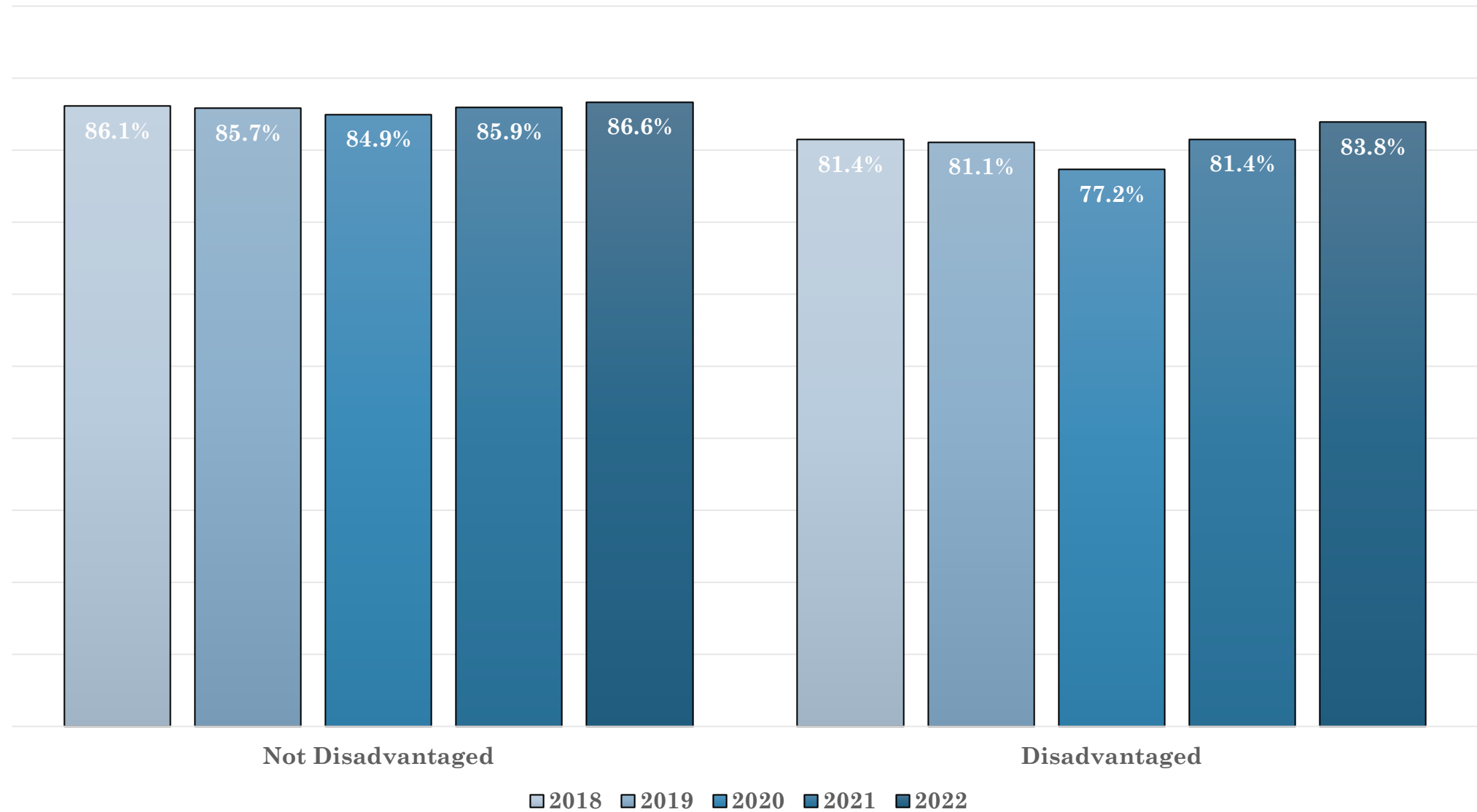
# Course Completion Rate by Academic Disadvantage



Source: Argos Grades Analysis Data Block, 2018-2022

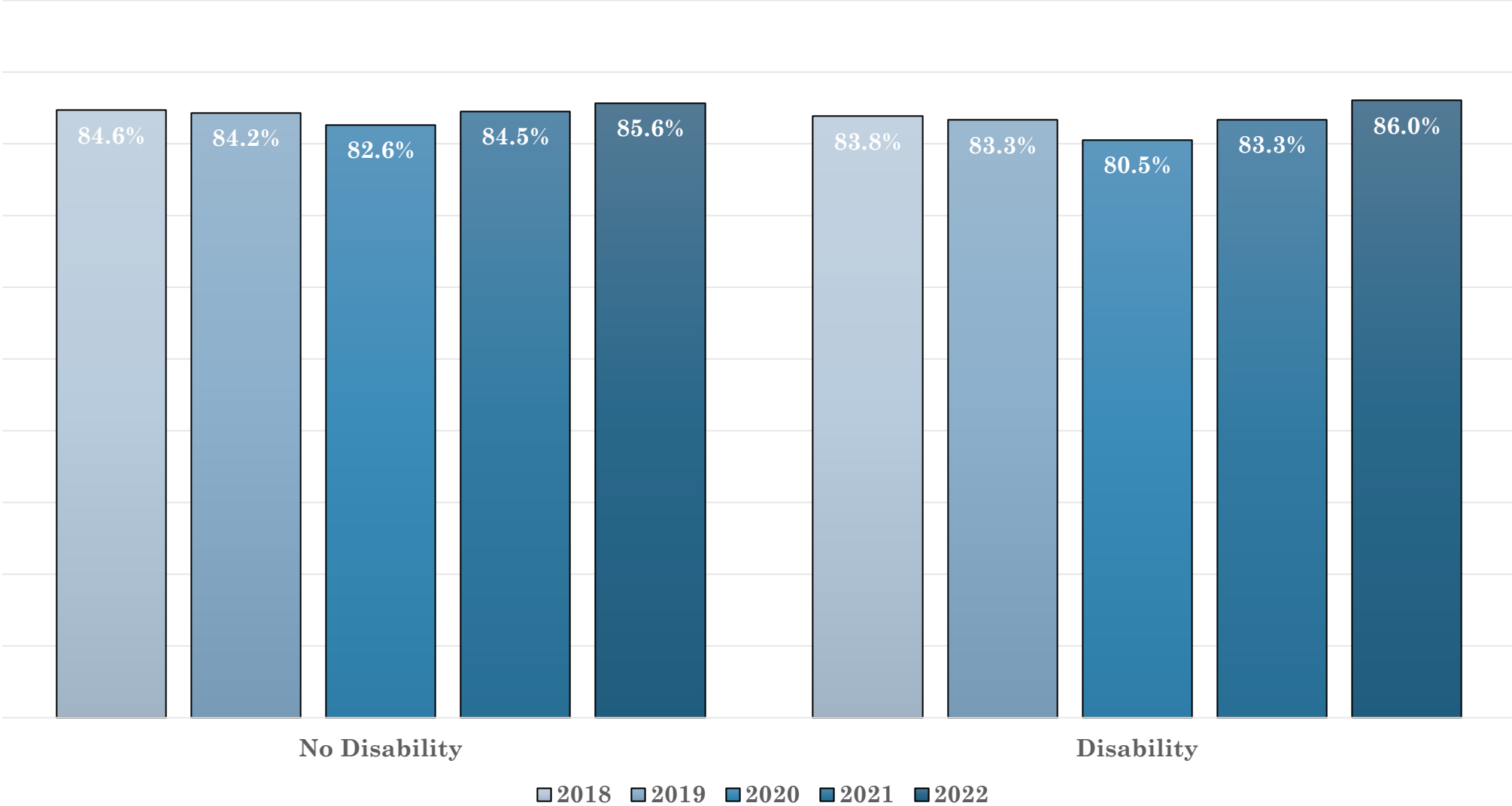


# Course Completion Rate by Economic Disadvantage



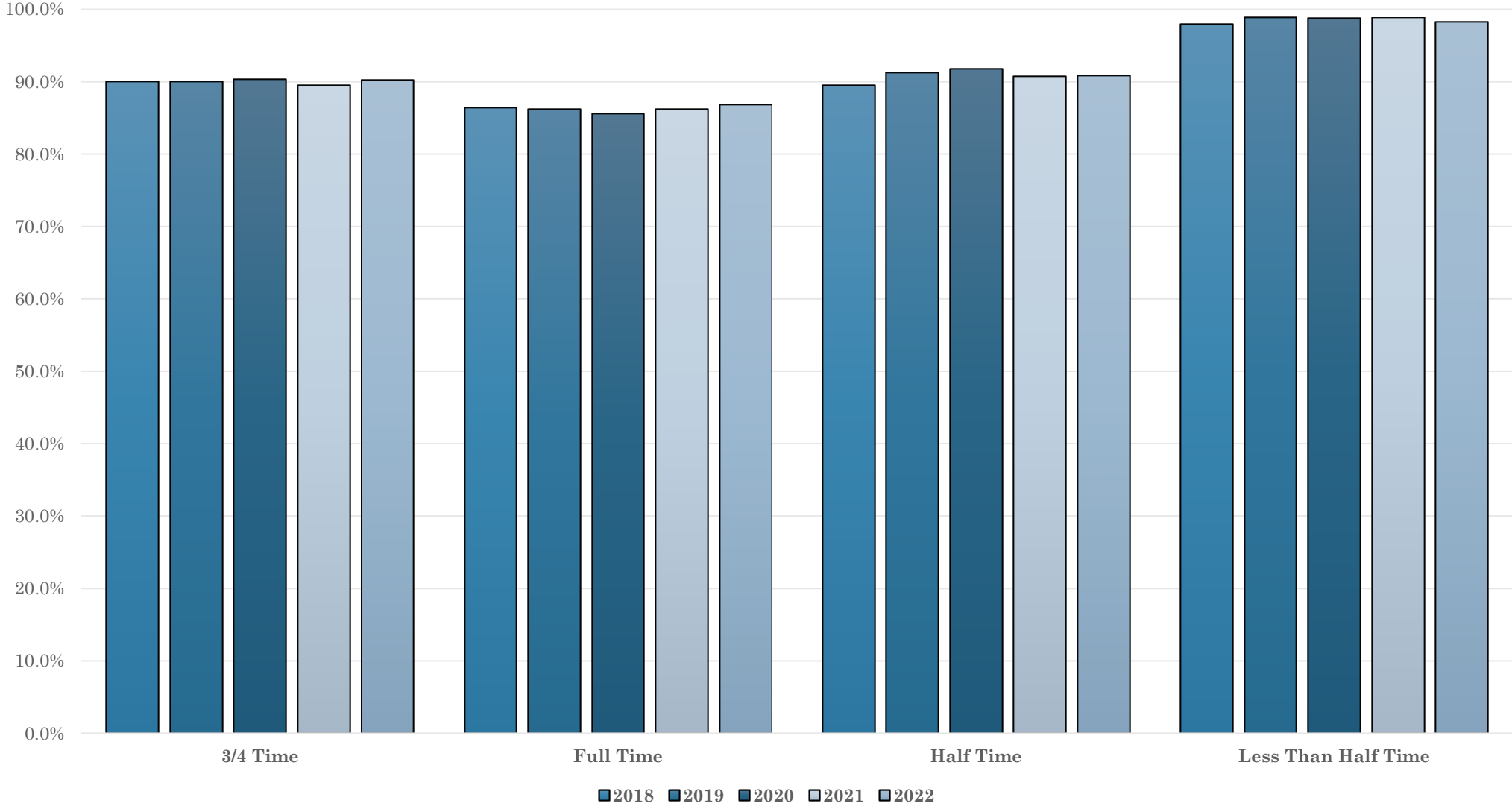
Source: Argos Grades Analysis Data Block, 2018-2022

# Course Completion Rate by Individual Disability



Source: Argos Grades Analysis Data Block, 2018-2022

# Course Completion Rate by Enrollment Intensity



Source: Argos Grades Analysis Data Block, 2018-2022